

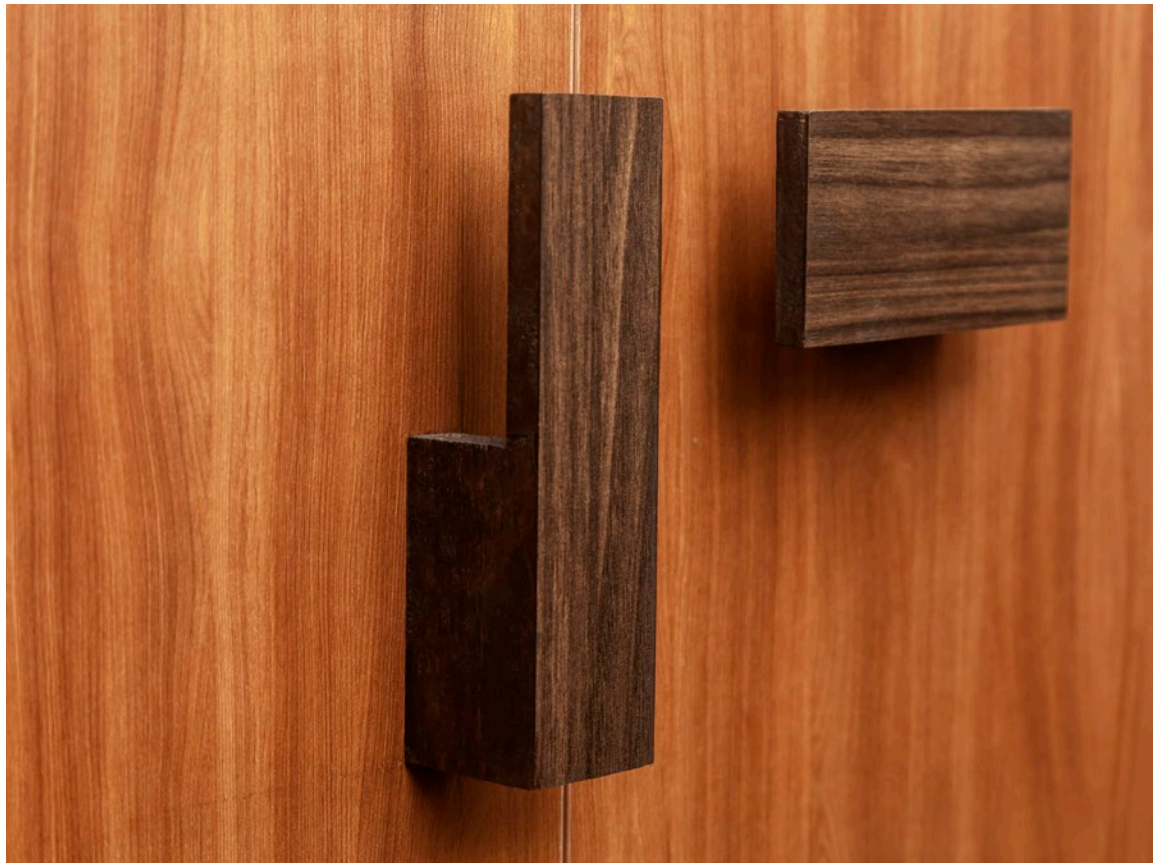


SINGH RESIDENCE

2018



ABOUT



Singh Residence

Apartment 14201

ATS Pristine, Sector 150, Noida

A residential apartment in a high-rise group housing complex off the Greater NOIDA Expressway

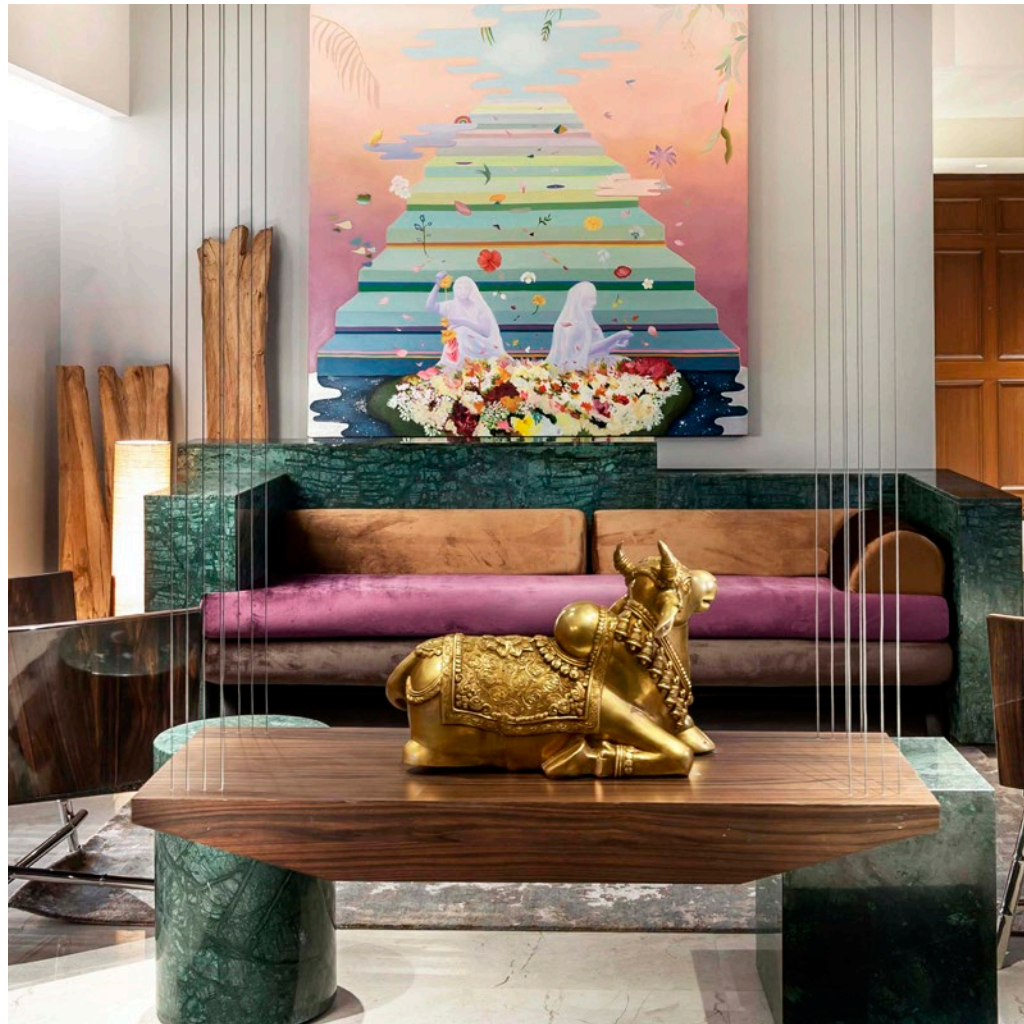
Built up area: 2700 sq.ft.

Total covered area: 3200 sq.ft.

Design started December 2017

Construction completed November 2018

ARCHITECT'S NOTE



The client lives outside of India and wished to have a pied-à-terre in Delhi for her parents and herself.

Because this house is only intended to be used a few months a year, it is relatively free of the usual relentless demands of storage and utility. This became an opportunity for the architect to adopt a sculptor's approach—first sculpting the spatial container, then composing its large and small objects, and finally quietly introducing a layer of ergonomic comfort to create the necessary functionality.

Particularly in an apartment, the transitions from one space to the next—from the public to semi-private to private—are critical to ensure that the house becomes more than a group of highly private, individually controlled territories. It is in these in-between spaces that exist opportunities of unlikely and interesting engagement that elevates a house to a warm connected home. Each corridor, passageway and niche is a precious moment to add diversity to the spatial experiences and moods contained in the house.

To carry forth the architect's sculpture, a large and rich palette of texture and colour is employed. In keeping with the client's brief, references to Indian tradition and materials are incorporated to flavor the intrinsic spatial experience instead of standing out as a dominating theme or being reduced to an ethnic motif.



PROJECT CREDITS

MWorks Architecture & Project Management
Malvika Mehta

with
Manish Bhardwaj
Tammana Verma

Contractors
Gajanand Sharma
Aneesh Khan

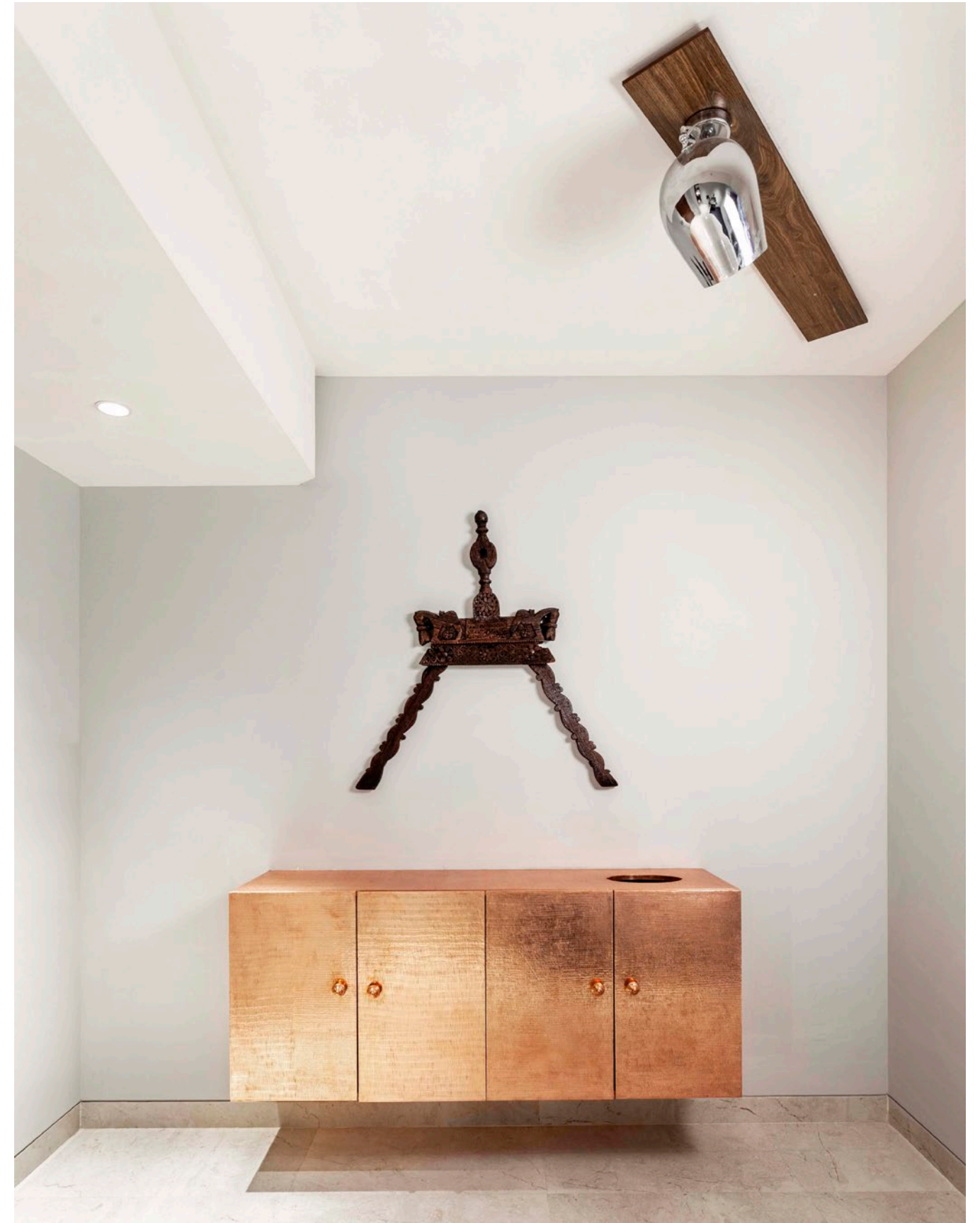
Photographs
Jeetin Sharma

ALL DRAWINGS AND PHOTOGRAPHS ©MWORKS 2019

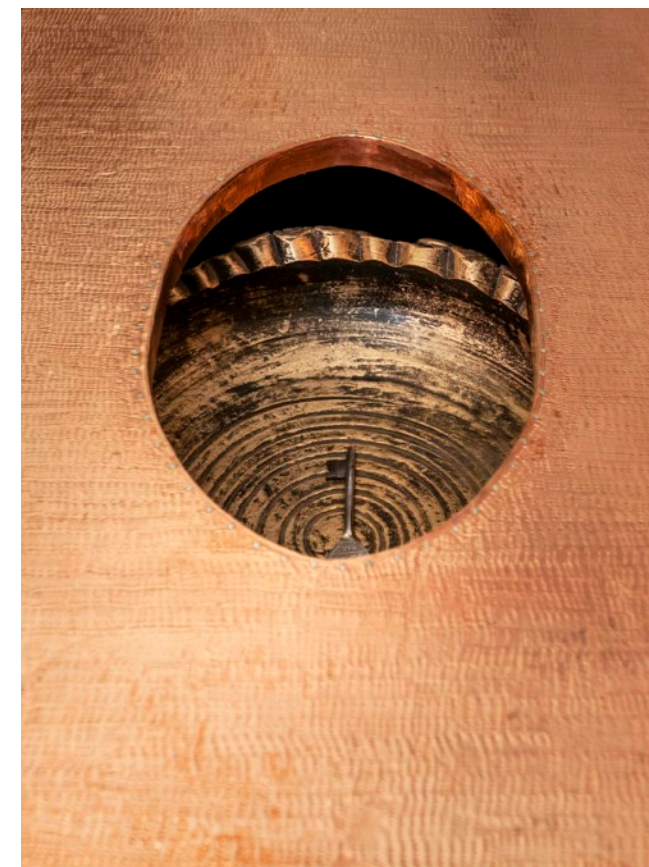
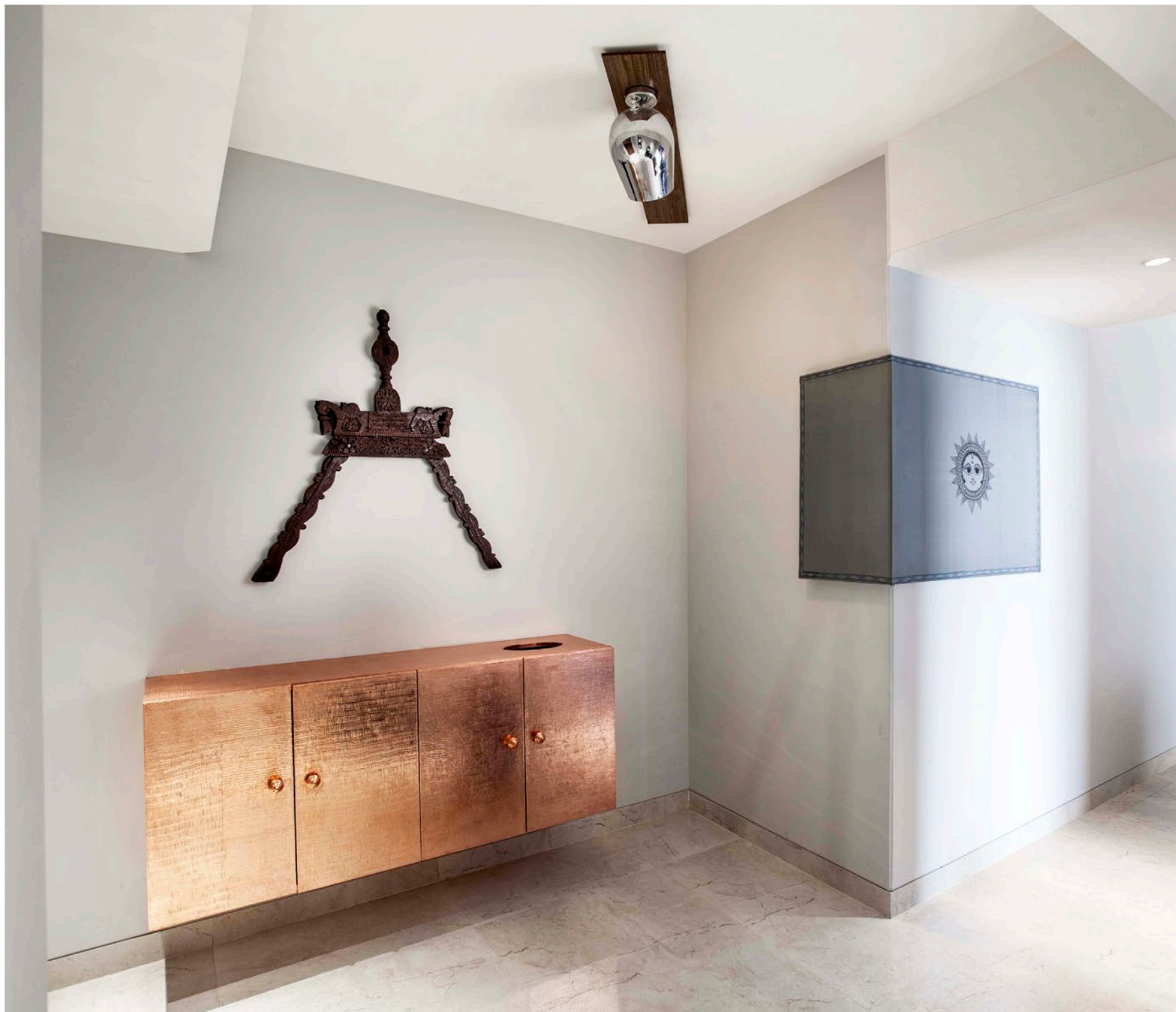
FLOOR PLAN



- | | | | |
|----|----------------------|----|-----------------|
| 01 | Lobby | 08 | Master Bedroom |
| 02 | Foyer | 09 | Master Bathroom |
| 03 | Study | 10 | Bedroom |
| 04 | Powder Room | 11 | Bathroom |
| 05 | Living / Dining Room | 12 | Staff Room |
| 06 | Family Lounge | 13 | Utility |
| 07 | Kitchen | | |



The foyer features a copper-clad shoe cabinet and a stone-clad bench. An antique wood swing is repurposed as wall décor.

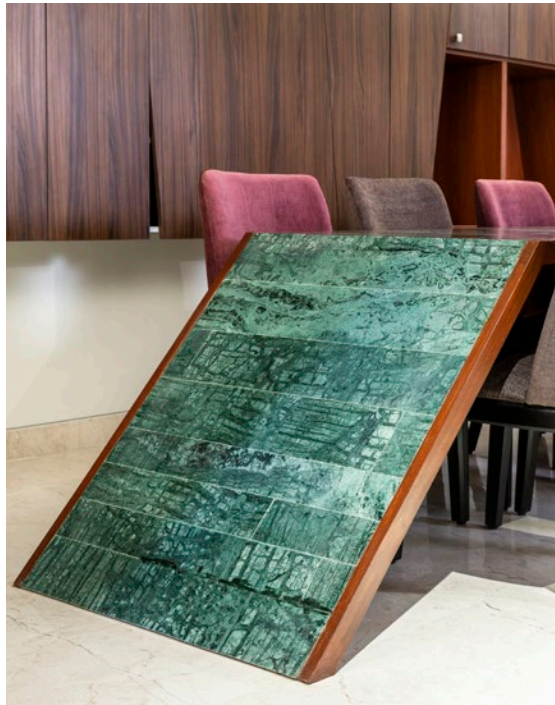


The copper surface is textured by hand.
A negative is created to hold the key bowl.



To carry forth the architect's sculpture, a large and rich palette of texture and colour is employed.

The living room features a commissioned artwork, 6'x6', oil on canvas by artist Monica Figueredo. The artwork depicts the towering staircase of the Jagdish Temple in Udaipur, with flower-sellers in the foreground. It creates a depth of field that offsets the stark walnut-clad storage of the facing wall.



The dining table surface is half Marble, half wood.

Top photograph by Jatinder Marwaha

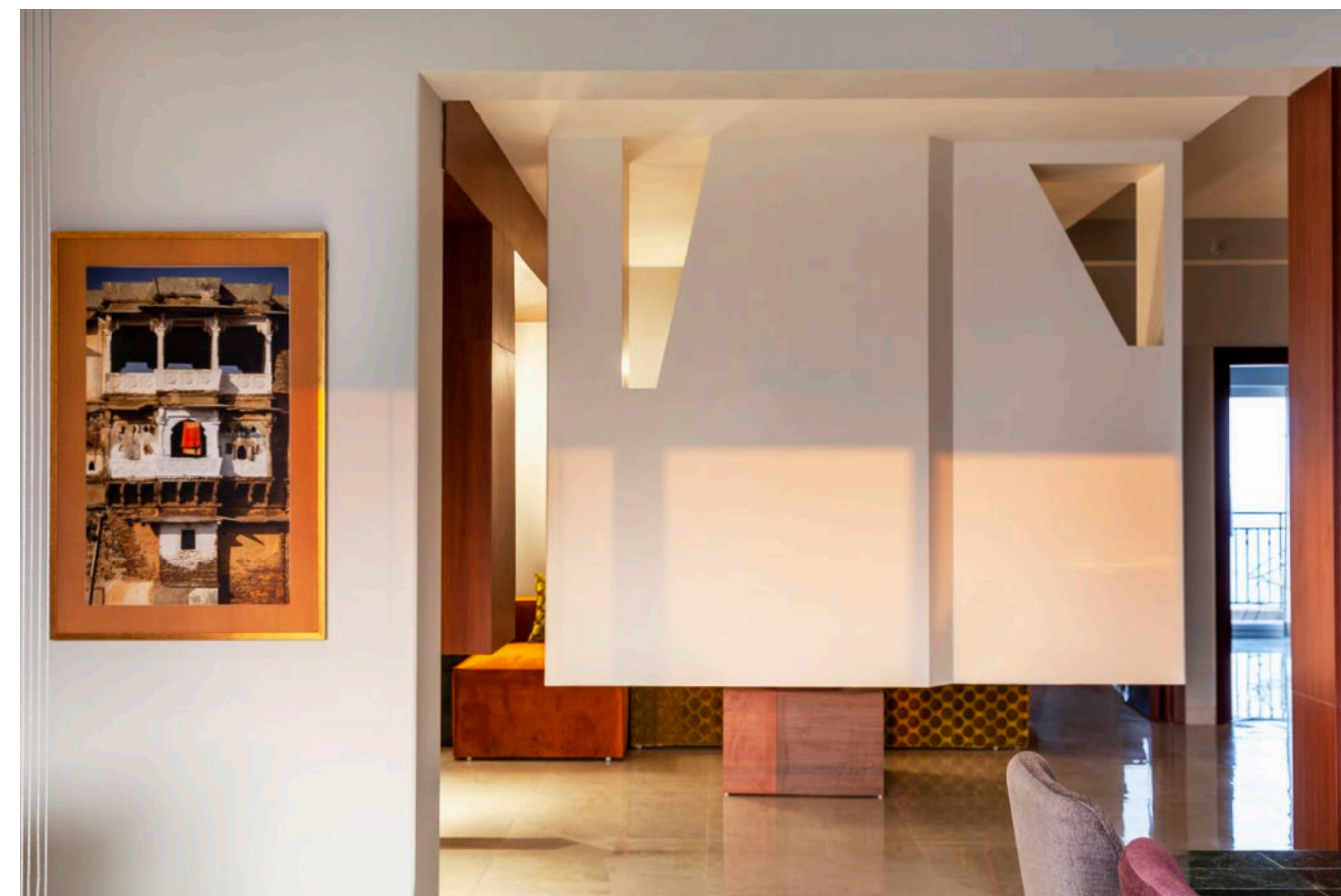
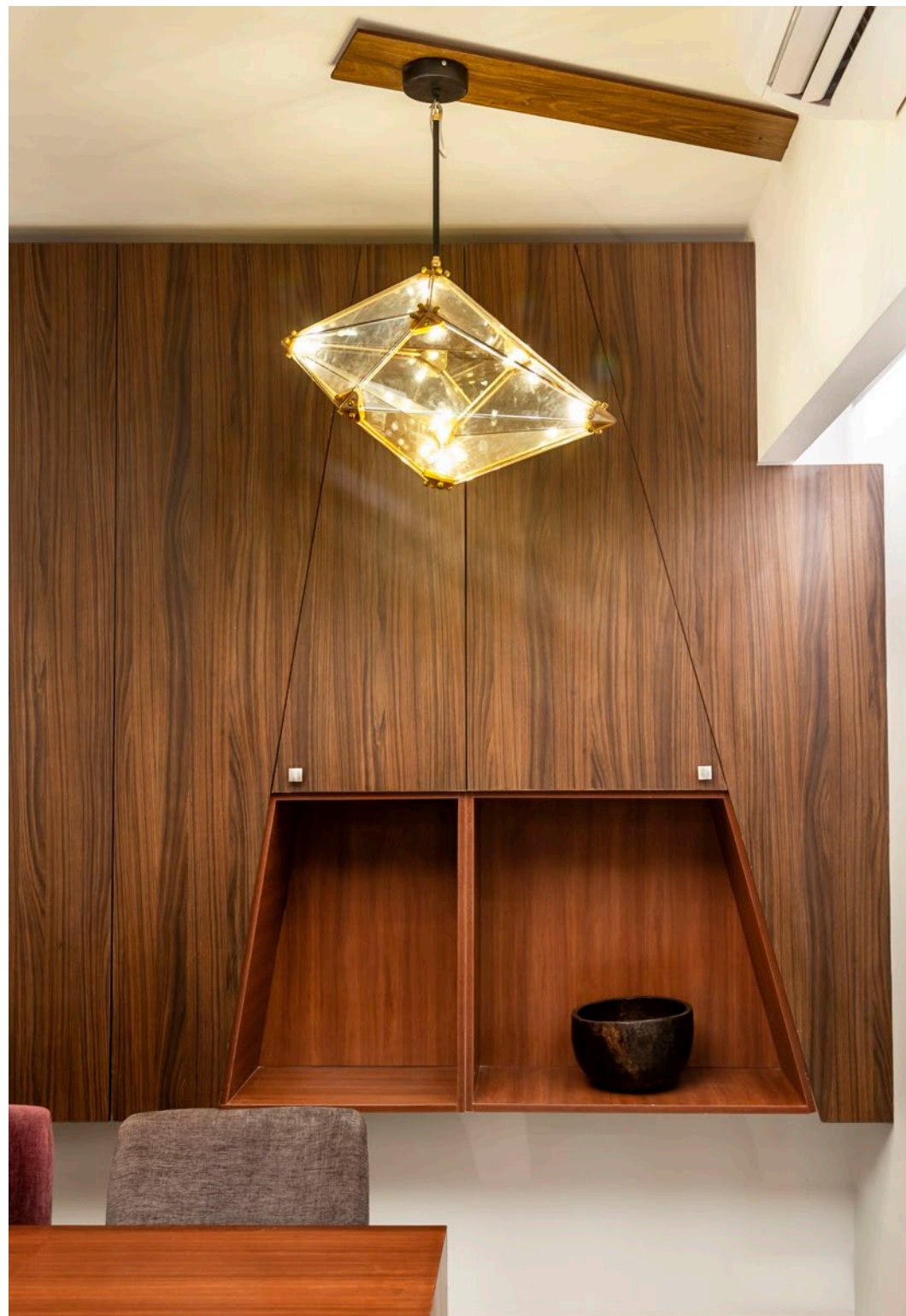


A swing is used to create a notional partition between the sitting and dining spaces. Its steel threads contrast against the brass of the Nandi bull sculpture, sourced directly from its craftsman in Tikamgarh, Madhya Pradesh that rests on its surface.

Armchairs from Alex Davis are complimented by a pair of round and square Udaipur Green Marble sidetables.

Rotated wood finished panels on the ceiling deliver electrical services to the centre of respective spaces and also set the visual language of the spatial experience.





To create interest while working within the limitations of the shell and services inherited from the developer became the architect's challenge. Walls and partitions were shifted to carve out a powder room and the family lounge.



The TV is contained in a large white box suspended from the ceiling. The suspension allows daylight to bounce off the floor and reach this deep heart of the floorplate.

In contrast to the living room furniture, the TV couch is designed to be playful, in form, fabric and detail. It features chunky pipings, bold circular embossing and high contrast colours.



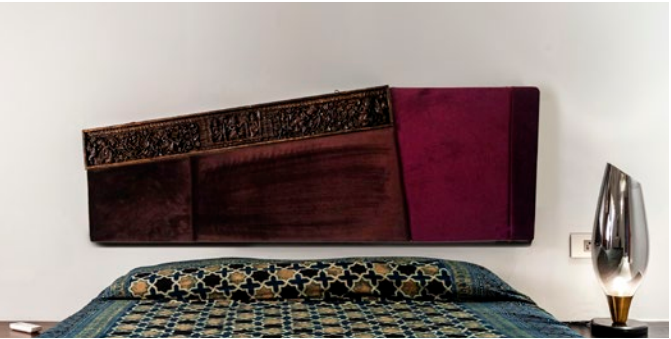
A second, smaller wood-finished box descends from the ceiling to form the prayer box. The copper sheet clad arch profile references a classic Indian traditional motif.



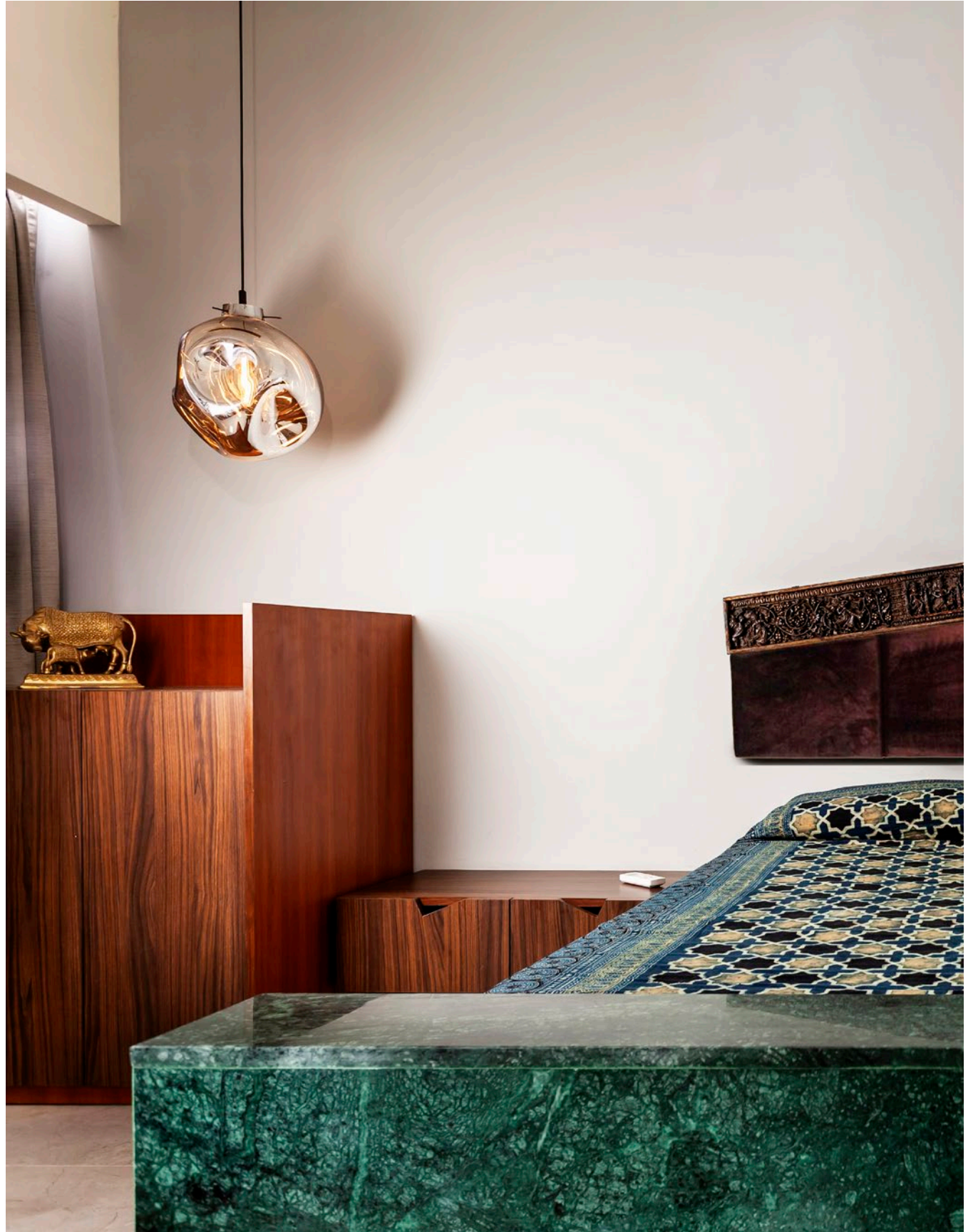
Udaipur Green Marble and Black Granite are combined in a variety of junctions and edge details to compose various custom-built furniture pieces, including benches, planters, the main living room sofa and the three beds.



Contrasting shades of wooden laminates are employed to delineate the sculptural forms and heighten dynamism.



Upholstered velvet headboards complement fixed stone-clad beds.







The washbasins are sculpted from blocks of various Indian marbles and are set on counters of matching stone to create the theater of texture.

In the master bathroom, the richness of Brown Bidasar Marble is refreshed by transparent brown glass partitions.





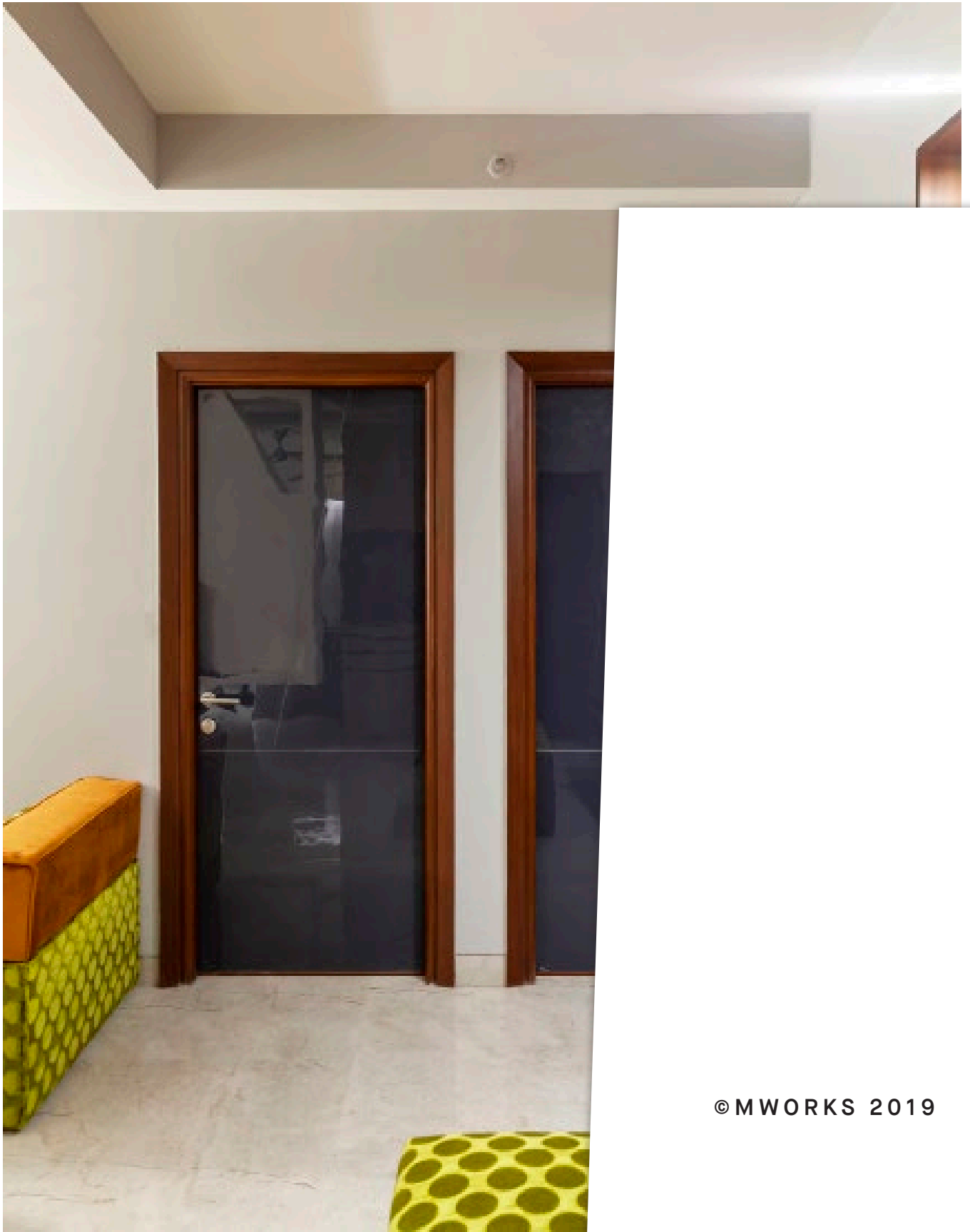
Malvika Mehta is an architect with a deep interest in the visual arts. In her practice, she attempts to create immersive spatial experiences where structure, interior and object are conceived as a continuum.

Her work is expressive and demonstrates a feel for material and their behaviours. Meaning and values are conveyed by building a narrative in space. Her skills and work experiences in the closely associated disciplines of lighting design and art production also inform her practice.

In 2014, she initiated the Bichli Haveli Project, restoring and rehabilitating a 140-year-old haveli located in the old city of Udaipur. Beginning with research and documentation, since 2017 she has been engaged in the design and project management of the restoration work as well as the many collaborations under its project umbrella. Simultaneously, she has also completed independent interior and architecture commissions in and around New Delhi.

Malvika received her Bachelor's in architecture from the School of Planning and Architecture, Delhi in 2014. She practices as MWorks and is based out of Delhi and Udaipur.

MALVIKAMEHTA.COM



© MWORKS 2019